

# Moiderl, i sãg dirs drei-, viermål

Zwiefacher aus der Oberpfalz



Ja, **G** Moi-derl, i **G** sag dirs drei-, **D7** vier-mal, **D7** vier-mal, **D7** gãih ma net



**D7** ei - ni in **G** Kõih-stall, **G** Kõih-stall. **G** Gãih ma net **G** af - fi aafs **C** Heu **C**



**C** Heu **C** **D7** bin i net **D7** sel - ber da - **G** bei. **D7** sel - ber da - **G** bei.



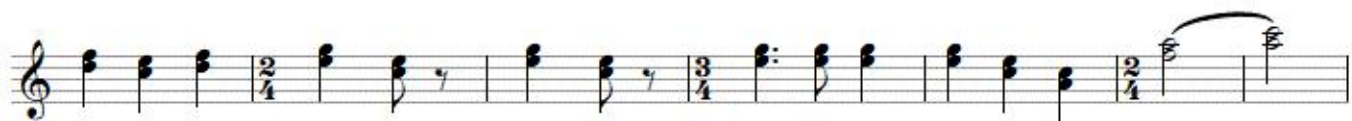
**G** **D7** **D7** **G** **G** a-m



**D7** **G** **G** a-m **D7** **G**



Ja, **C** Moi-derl, i **C** sag dirs drei-, **G7** vier-mal, **G7** vier-mal, **G7** gãih ma net



**G7** ei - ni in **C** Kõih-stall, **C** Kõih-stall. **C** Gãih ma net **C** af - fi aafs **F** Heu **F**



**F** Heu **F** **G7** bin i net **G7** sel - ber da - **C** bei. **G7** sel - ber da - **C** bei.

# *Moiderl, i såg dirs drei-, viermål*

Zwiefacher aus der Oberpfalz

Seite 2

The image shows a musical score for a piece titled "Moiderl, i såg dirs drei-, viermål". The score is written on two staves in treble clef. The first staff begins with a 3/4 time signature and contains six measures. The second staff begins with a 3/4 time signature and contains six measures. The piece concludes with a double bar line. Chord symbols are placed below the notes: C, G7, G7, C, C, d-m on the first staff; G7, C, C, d-m, G7, C on the second staff. The time signature changes from 3/4 to 2/4 in the second measure of the first staff and the first measure of the second staff, and returns to 3/4 in the fifth measure of the second staff.

Satz Franz Fuchs  
Buchberggasse 63  
A 3400 Klosterneuburg  
franz.fuchs@stammtischmusik.at