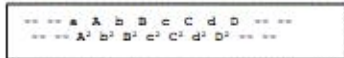


An der schönen blauen Donau

Donauwalzer von Johann Strauß Sohn, verkürzt

Griffschrift 4-Reiher
Moll auf Zug



Satz Franz Fuchs
Buchberggasse 63
A 3400 Klosterneuburg
franz.fuchs@stammtischmusik.at



B b b A b b B b b A b b B b b



B c c B c c B b b z z z z B B B z z



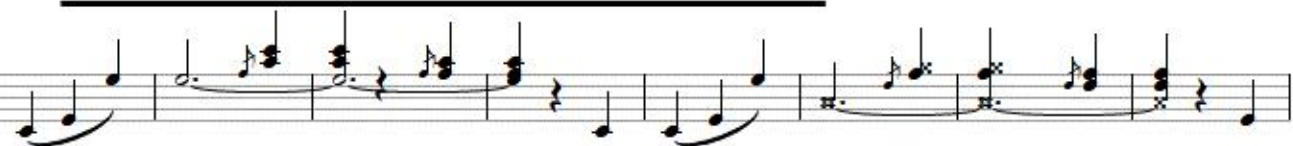
z B B B z z B - z B - z B - z



A - z B - z B - z B - z B - z B - z



z z z B b b A b b B b b A b b A b b B b b A b b



B b b A b b B b b A b b B b b B b b A b b B b b



A b b B b b A b b B b b B² b b C b b B b b C b b



C² c² c² B b b B b b B b b B b b C² - z B - z B z b

An der schönen blauen Donau

Donauwalzer von Johann Strauß Sohn, verkürzt

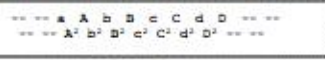
Satz Franz Fuchs
Buchberggasse 63

A 3400 Klosterneuburg

franz.fuchs@stammtischmusik.at

Griffschrift 4-Reiher

Moll auf Zug



First musical staff with notes and rests.

B W a a A a a W a a A a a

Second musical staff with notes and rests.

A a a B² a a A a a B² a a W a a A a a

Third musical staff with notes and rests.

W a a A a a B b b A a a A B² A

Fourth musical staff with notes and rests.

A A b b B b b A b b B b b B b b A b b

Fifth musical staff with notes and rests.

B b b A b b A b b B b b A b b B b b B b b C c c

Sixth musical staff with first and second endings.

B b b B B C c c B c c C c c B c c

Seventh musical staff with notes and rests.

C c c B c c B c c C c c B c c C c c C c c

Eighth musical staff with first and second endings.

C² c c B B B² B² B² b² b² B² B² b² B²

An der schönen blauen Donau

Donauwalzer von Johann Strauß Sohn, verkürzt

Satz Franz Fuchs

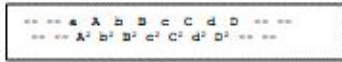
Buchberggasse 63

A 3400 Klostereuburg

franz.fuchs@stammtischmusik.at

Griffschrift 4-Reiher

Moll auf Zug



First musical staff with notes and rests.

C e e C e e C e e C e e

Second musical staff with notes and rests.

C e e C e e C e e C e e C e e

Third musical staff with notes and rests.

C e e C e e C e e C e e

Fourth musical staff with notes, rests, and first/second endings.

C C B B C C C C C C² D C

Fifth musical staff with notes and rests.

C e e B e e B e e C e e B e e C e e

Sixth musical staff with notes and rests.

D d d B e e C e e B e e B e e C e e

Seventh musical staff with notes, rests, and first/second endings.

C C C C² B C D² d² d² C² c² c² C²

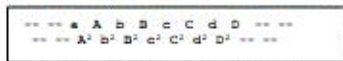
Eighth musical staff with notes and rests.

C² C e e B e e C e e B e e B e e C e e B e e

An der schönen blauen Donau

Donauwalzer von Johann Strauß Sohn, verkürzt

Griffschrift 4-Reiher
Moll auf Zug



Satz Franz Fuchs
Buchberggasse 63
A 3400 Klosterneuburg
franz.fuchs@stammtischmusik.at

C e e C e e B e e C e e C² e e B b b B b b

C C² C C ♯ ♯ C ♯ ♯

D² — ♯ D² — D² D² ♯ ♯ ♯ ♯ ♯ D — ♯

A A D A ♯ ♯ A ♯ ♯ B ♯ ♯ B ♯ ♯

B b b B b b B ♯ ♯ B ♯ ♯ B — ♯